

Chalet Chopine

Méribel

3rd Floor



Maximum Guests: 10
Living Area: 300 m²
Staff: 5

Bedroom 1
Raised double bed with ensuite bathroom

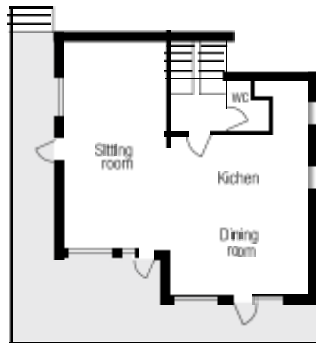
Bedroom 2
Twin or super-king size bed with private shower

Bedroom 3
Twin or super-king size bed with ensuite bathroom

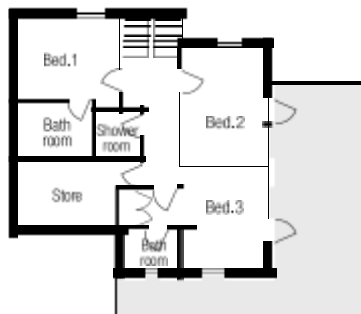
Bedroom 4
Super-king size bed with ensuite bathroom

Bedroom 5
Super-king size bed with ensuite bathroom

2nd Floor



1st Floor



Ground Floor

