

Chalet Chopine

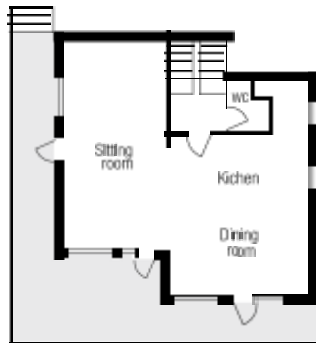
Méribel

3rd Floor



Maximum Guests: 10
Living Area: 300 m²
Staff: 2 + chalet to piste drop off service

2nd Floor



Bedroom 1
Raised double bed with ensuite bathroom

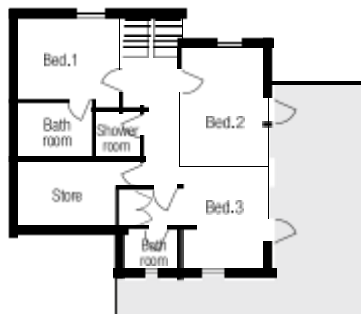
Bedroom 2
Twin or super-king size bed with private shower

Bedroom 3
Twin or super-king size bed with ensuite bathroom

Bedroom 4
Super-king size bed with ensuite bathroom

Bedroom 5
Super-king size bed with ensuite bathroom

1st Floor



Ground Floor

