

Consensio
EXCEPTIONAL PROPERTIES • EXCEPTIONAL SERVICE

Apartment Tournesol

Val d'Isère
- Sleeps 8 -

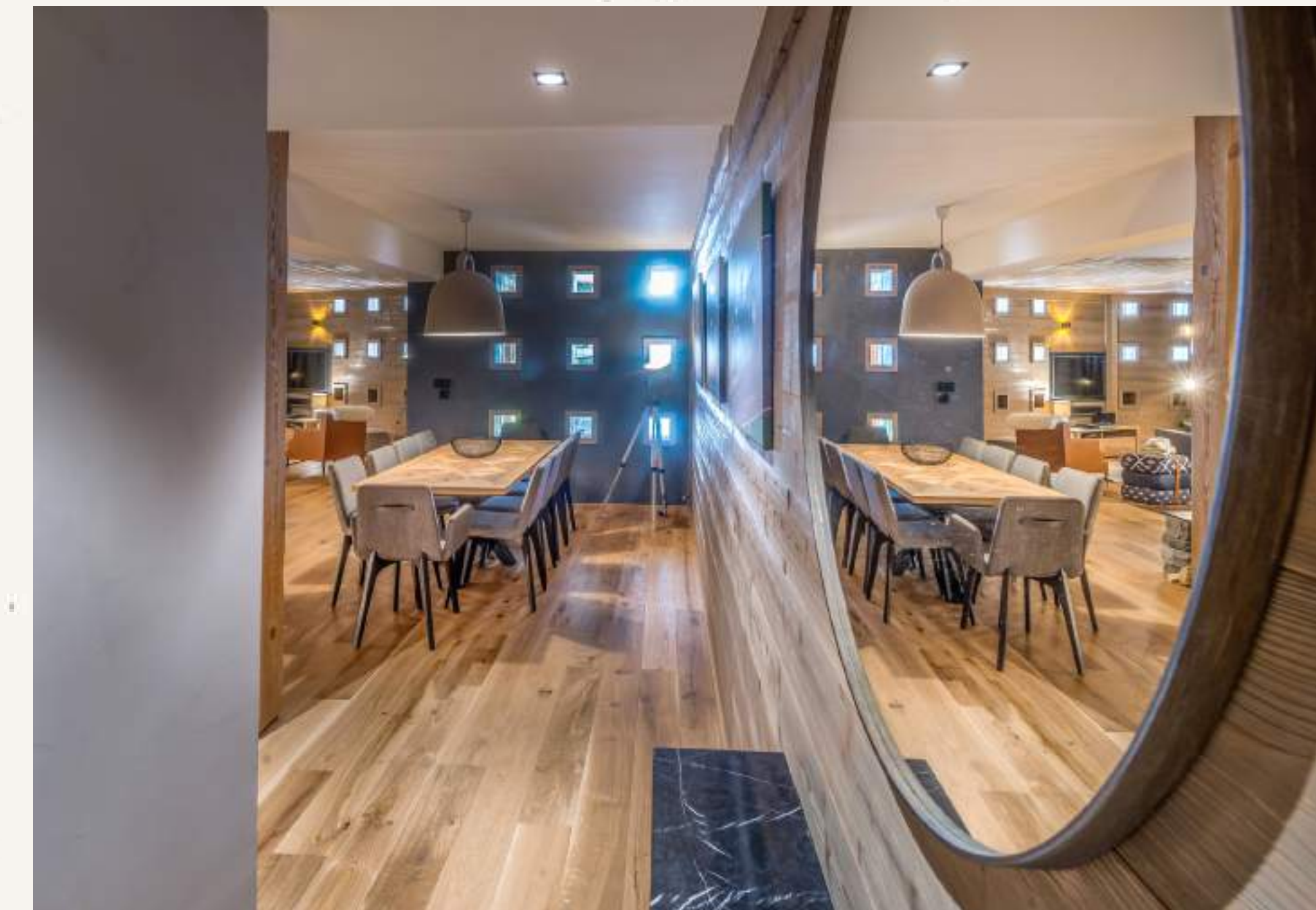
Tournesol is a modern apartment, part of the re-development of the famous Hotel l'Avancher. Located in the Residence Myrtille, it is part of a collection of just seven apartments. Situated five minutes level walk to the Old Town, the old heart of Val d'Isère, you can enjoy the quieter relaxed atmosphere strolling amongst the historic wooden buildings and explore the beautiful village church. The superb location is ski-in, meaning you can ski back directly to the front door and in the morning, there is a simple walk to the bottom of the Solaise to get to the pistes.

Sleeping eight guests in four double en-suite bedrooms, Tournesol has been tastefully designed in a contemporary Alpine style. The open plan living and dining areas are comfortable and lead to your private terrace with views of the iconic La Face piste. The kitchen is well equipped with a dishwasher and wine fridge.



The heated ski and boot locker is located at the entrance to the building, and there is a utility room inside the apartment conveniently located for you to store your ski wear. The apartment comes with a covered parking place means you can easily drive to the resort from the airport.

Leaving Tournesol on foot, you join the main avenue running through the village giving you great access to Val d'Isère's large choice of shops, bars, cafes and restaurants. Make the most of your stay by letting the included pre and post-arrival concierge organise all aspects of your holiday such as ski lessons, nannies, activities and your lift passes and ski hire equipment will be delivered to your door. Breakfast pastry delivery and pre-arrival shopping can also be arranged if wanted.



Maximum Guests: 8

Living Area: 135 m²

Bedroom 1

Double or twin bed with TV and en-suite bath and shower room

Bedroom 2

Double bed with TV and en-suite shower room

Bedroom 3

Double or twin bed with TV and en-suite shower room

Bedroom 4

Double or twin bed with TV and en-suite shower room

Infant cots

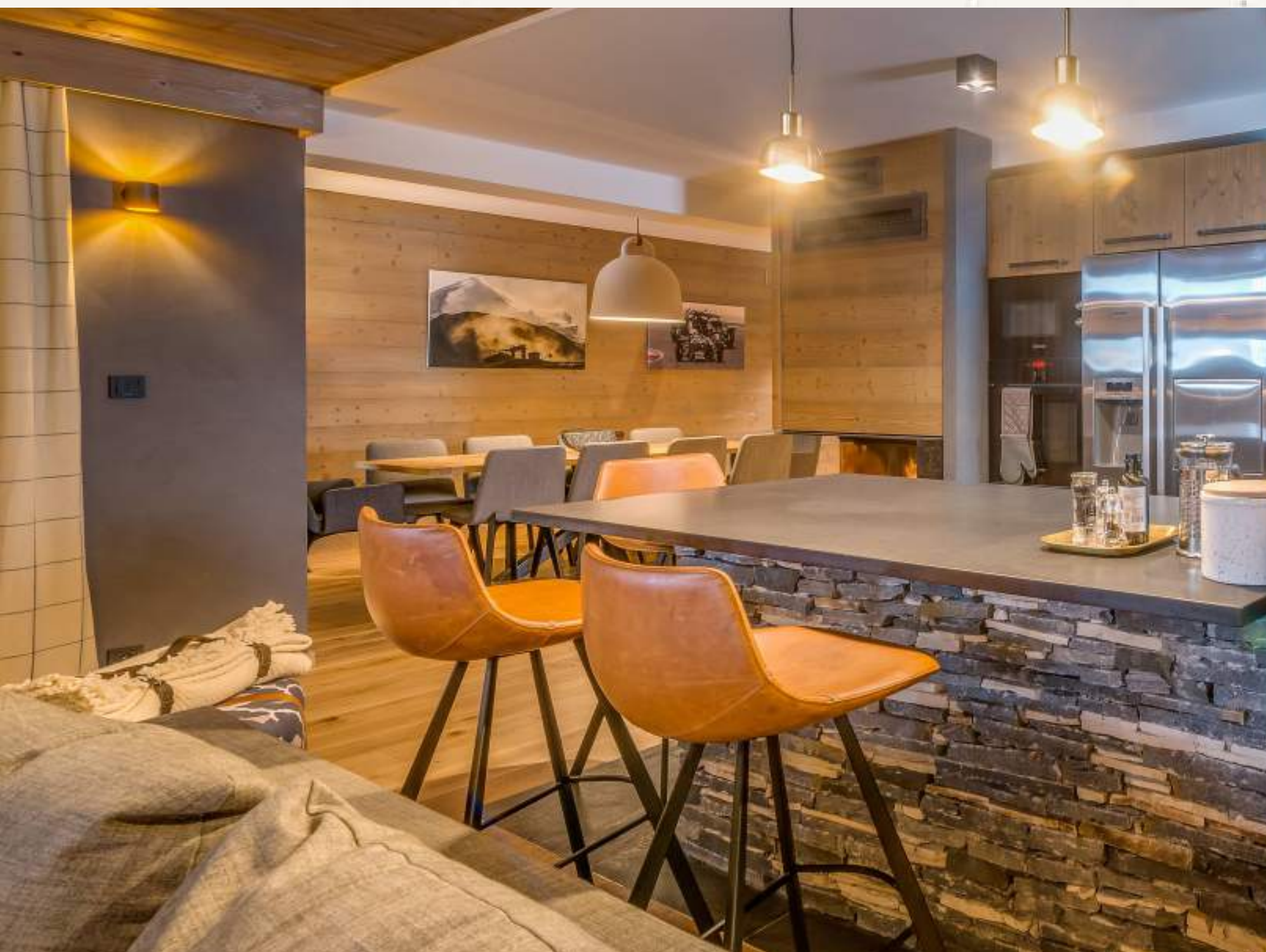
Bedrooms 1 and 4 are the most suitable for a cot



Consensio

Facilities

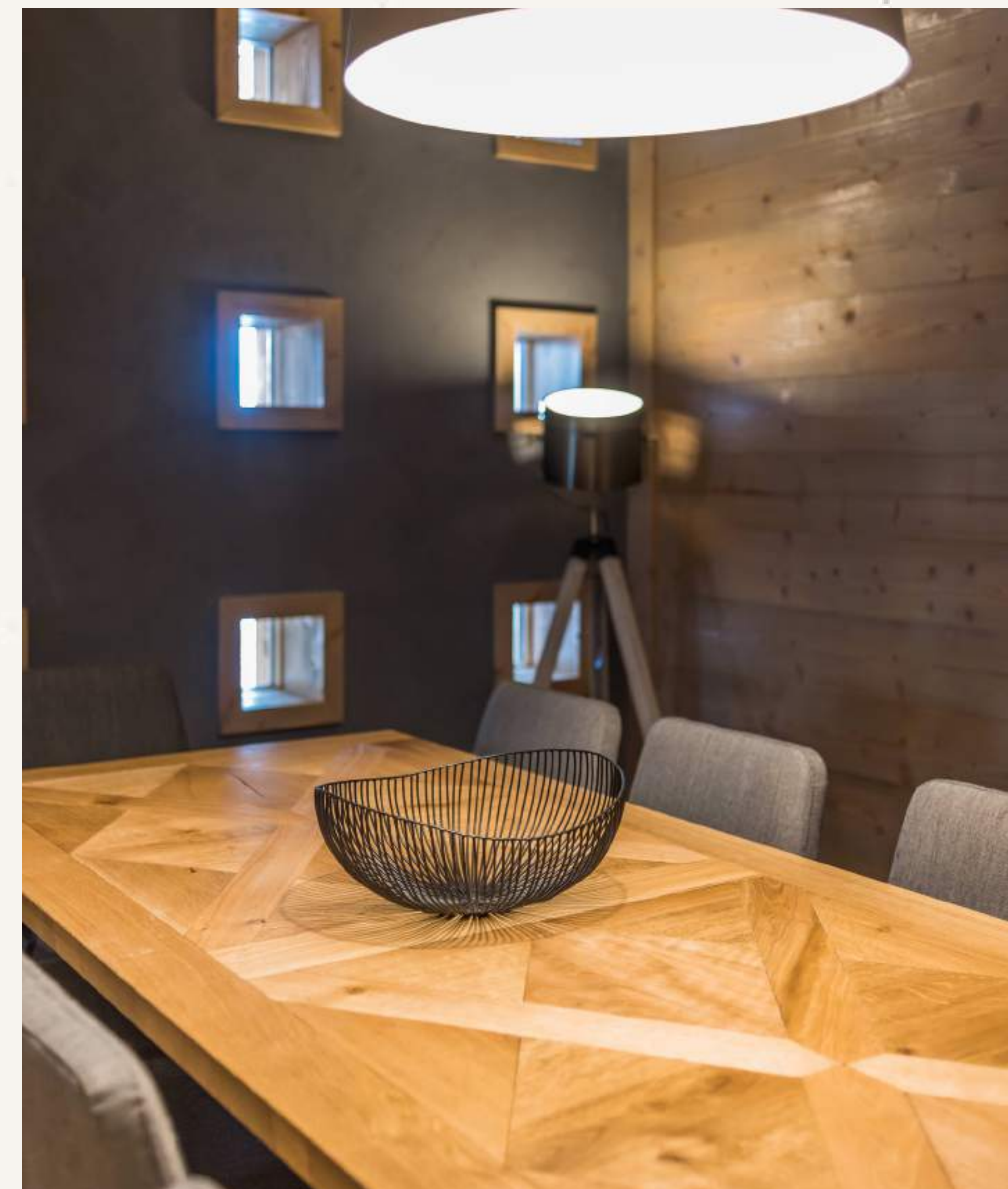
- Open fireplace
- Self-catering Kitchen
- Ski-In
- Balconies with mountain views
- Wireless internet
- Covered parking space
- Ski and boot storage locker
- Hairdryer in every room
- Personal bathrobes and slippers
- Luxury Bathroom Products



Consensio

What's Included?

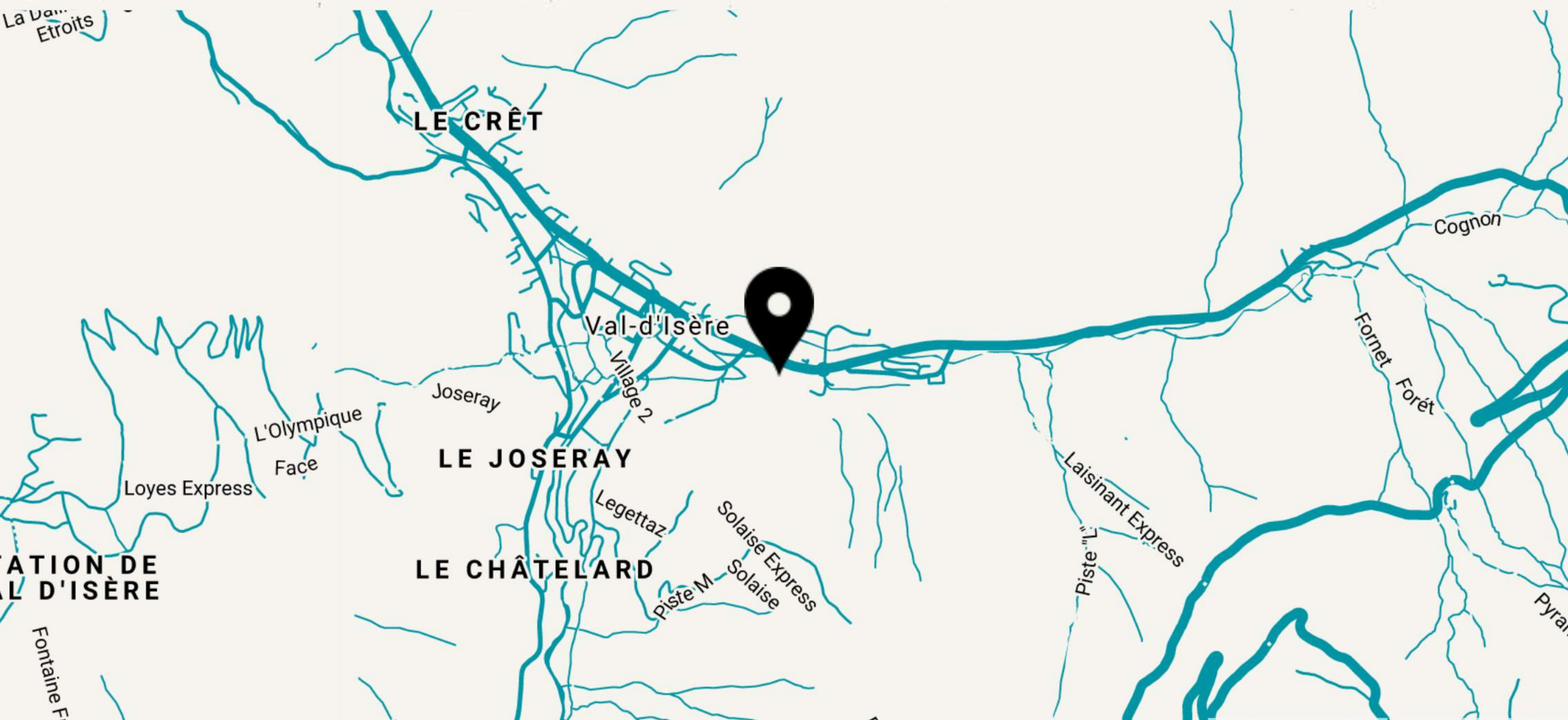
- Pre-arrival concierge service
- Welcome pack including a bottle of Perrier-Jouët Champagne
- Meet and greet introduction to the property
- In resort concierge service
- Finest quality bathroom products in each bathroom
- Luxurious slippers and dressing gowns
- Linen and towels
- Beds made on arrival
- Daily cleaning (90mins) and final end of stay cleaning
- Mid-week towel change
- Wi-fi
- Sky



Consensio

Access

Tournesol is a ski-in property with just a very short walk to the town centre and Val d'Isère's large choice of shops, bars, cafes and restaurants.



Contact Us

Please get in touch with Consensio to book your stay direct.

Consensio is a member of ABTA, giving you peace of mind when booking your holiday.

Consensio is also a member of The Bespoke Travel Club – a collection of small specialist travel companies, providing a very personal service and creating amazing travel experiences throughout the world



www.consensiochalets.co.uk



sales@consensiochalets.co.uk



+44 (0) 203 393 0833

Consensio
EXCEPTIONAL PROPERTIES • EXCEPTIONAL SERVICE

